

Curriculum Studies



***Pam Brown** Associate Professor

•Teacher research, teacher autonomy, and media literacy

pamela.u.brown@okstate.edu



***Kathryn Castle** Professor

•Teacher research and the application of constructivist theory and phenomenological theory to knowledge construction

kathryn.castle@okstate.edu



***Pamela Fry** Professor

pamela.fry@okstate.edu



***Hongyu Wang** Associate Professor

•Post-structural and Asian philosophies, cross-cultural life histories and thought, autobiography and curriculum, international studies, gender issues, psychoanalysis and culture, chaos and complexity theory, and multicultural education.

hongyu.wang@okstate.edu



***Caroline Beller** Associate Professor

•Science education and professional development
•Constructivist learning

caroline.beller@okstate.edu

Elementary



**David
Buckner**

Assistant
Professor

- Civics, service preparation,
teacher preparation

david.buckner@okstate.edu



**Jean
Dockers**

Assistant
Professor

- Science education,
integrated curriculum,
inquiry

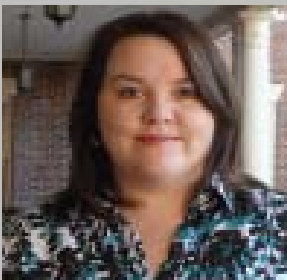
jean.dockers@okstate.edu



Juliana Utley Assistant
Professor

- Mathematical Dispositions
(This includes beliefs,
attitudes, efficacy, etc.)
- Mathematical knowledge
of pre- and in-service
teachers

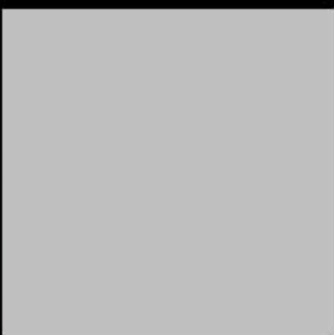
juliana.utley@okstate.edu



Toni Ivey

Assistant
Professor

toni.ivey@okstate.edu



Robin Fuxa

Clinical
Instructor

robin.fuxa@okstate.edu



**Adrienne
Redmond**

Assistant
Professor

adrienne.redmond@okstate.edu

Literacy



***Sandee
Goetze**

Associate
Professor

•Literacy and Technology,
Literacy Assessment, RTI
and Literacy Intervention

sandra.goetze@okstate.edu



***Suzi
Parsons**

Associate
Professor

•Literature for children and
young adults from a critical
literacy perspective
(currently conducting a
study of how adoption is
portrayed); teacher
education (conducting a
longitudinal study of the
effectiveness of the Excel
program; following teacher
candidates into the field to
determine how the
instruction we give in
nonfiction reading and
writing instruction transfers
to their teaching); nonfiction
reading and writing
instruction

sue.parsons@okstate.edu



**Jennifer
Sanders**

Assistant
Professor

•Literacy/Art in the
classroom

jen.sanders10@okstate.edu



**Alice
Giacobbe**

Assistant
Professor

- Mentoring beginning special education teachers; Reading methods for students with disabilities; Co-teaching best practices and school administrators

alice.giacobbe@okstate.edu



***Barbara
Walker**

Professor

barbara.walker@okstate.edu



***David
Yellin**

Professor

- Whole Language, Writing Development, Children's Literature, Oral Language Development

david.yellin@okstate.edu



**Qiuying
Wang**

Assistant
Professor

- Curriculum studies, multicultural education, Native American education, East/West cross-cultural inquiry and life history, globalization and education, poststructuralist philosophy and curriculum theory, gender issues in curriculum

qiuying.wang@okstate.edu



Seemi Aziz

Assistant
Professor

seemi.aziz@okstate.edu

Occ. Ed. Stud.



***Lynna
Ausburn**

Associate
Professor

- Theoretical foundations for virtual reality in education and training; interaction of virtual reality with types of learning tasks and learner characteristics; effective design of virtual reality programs

lynna.ausburn@okstate.edu



***Mary Jo
Self**

Associate
Professor

maryjo.self@okstate.edu



**Belinda
McCharen**

Associate
Professor

- Using career and technical education for high school reform, career development issues, career self-efficacy, self-efficacy of females, impact of career and technical education on student academic achievement
- Gender equity in high school

belinda.mccharen@okstate.edu



Ji Hoon Song Assistant
Professor

- Organizational Culture and Innovation, Knowledge Creation and Management, Organizational Learning Theories, Psychometric properties of Measurement, and Structural Equation Modeling in the fields of Human Resource and Organization Development (HROD).

jihoon.song@okstate.edu

Secondary Ed.



**Jeffery
Hawkins**

Associate
Professor

- Content analysis- text analysis, Curriculum and instruction, Education- secondary, middle, higher
- Multicultural- diversity, social justices, anti-bias, equity, Peace education- education for peace
- Social studies- history, geography, political science
- Teacher education- preservices/ in-services

jeffery.hawkins@okstate.edu



***Pat Jordan**

Associate
Professor

- The conceptual knowledge base of pre-service teachers, international education reforms, the effect of an inquiry-based approach on teaching mathematics, and the correlation of mathematics understanding and drawing.

patricia.jordan@okstate.edu

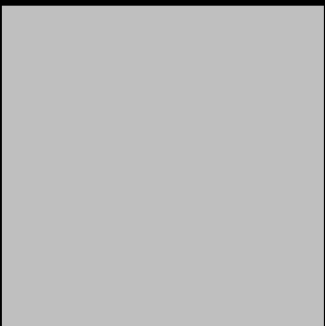


***Nadine
Olson**

Associate
Professor

- Second-language acquisition pedagogy, Cross-cultural studies, Spanish language and literatures
- English Language Learners and Learning, Program development in world languages, Assessment of world language programs
- Proficiency-based language instruction, Assessment in second languages

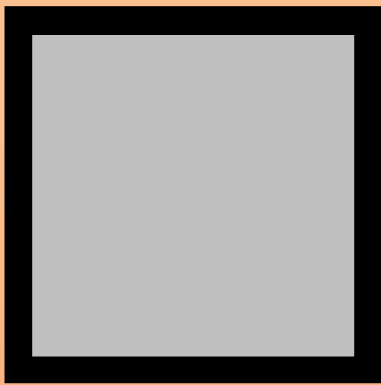
nadine.olson@okstate.edu



***Julie
Thomas**

Professor

julie.thomas@okstate.edu



***Virginia
Worley**

Associate
Professor

virginia.worley@okstate.edu



Julie Angle

Assistant
Professor

julie.angle@okstate.edu



***Bob Davis**

Associate
Professor

robert.davis@okstate.edu

Special Ed.



***Christine
Ormsbee**

Professor

- Special education improving general classroom environment for at risk/exceptional
- Special education-preassessment/ pre-referral processes
- Special education procedures and interventions to prevent special education identification
- Special education-serving exceptional children in the general classroom

ormsbee@okstate.edu



Allan Allday Assistant Professor

- Teacher behavior and how it affects student behavior.
- Expulsion/suspension and its affect on academic performance.

allan.allday@okstate.edu



Jamie Van Dycke Assistant Professor

- Secondary Transition; Self determination and self advocacy; familial and sibling issues within families that have members with a disability

jamielv@okstate.edu



Alice Giacobbe Assistant Professor

- Mentoring beginning special education teachers; Reading methods for students with disabilities; Co-teaching best practices and school administrators

alice.giacobbe@okstate.edu